

NATIONAL
PREA
RESOURCE
CENTER



NCCD | National Council on
Crime & Delinquency

Making Your Plan:
PREA and Victim Services in Jails
Session 2 of 2
January 24, 2013

Introduction and Welcome



is a nonprofit health and human rights organization that seeks to end sexual violence in all forms of detention.

PREA Resource Center

National PREA Resource Center (PRC)

PRC was established through a cooperative agreement between the Bureau of Justice Assistance and NCCD. The mission of the PRC is to assist adult prisons and jails, juvenile facilities, lockups, community corrections, and tribal facilities in their efforts to eliminate sexual abuse by increasing their capacity for prevention, detection, monitoring, responses to incidents, and services to victims and their families.

Today's Moderator



Linda McFarlane, MSW, LCSW
Deputy Executive Director,
Just Detention International

Webinar Agenda

- I. Call to Action
- II. Developing an Institutional Plan
- III. The Basics of Victim Response
- IV. Agreements with Service Providers
- V. Victim Services Program:
A Partner Conversation
- VI. Building Partnerships with Community
Organizations
- VII. Question and Answer

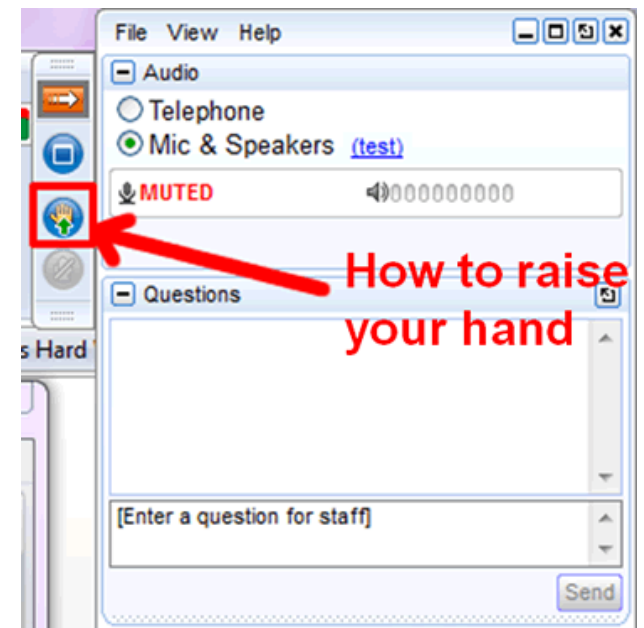


Barrilee, survivor of sexual abuse behind bars. Photo: James Stenson

Logistics

Webinar Information

- Raise your hand if you need assistance
- Use the Questions function to ask a question
- An archive of this webinar will be posted on the PREA Resource Center website: www.prearesourcecenter.org



Summary of Victim Services in Jails, Part I

The data shows:

- **1 in 10** parolees stated they had been sexually abused in their most recent stay in prison or jail

Your facility must have:

- A coordinated response plan

You must provide services and care to victims:

- Emergency medical care
- Ongoing mental health care, and
- Access to confidential outside support services

PREA Standards on Victim Services

Standards referenced in today's webinar will include:

- Facilities shall attempt to make available a victim advocate from a rape crisis center to provide confidential support services to a victim (§115.21(d)).
- Inmate access to outside confidential support services (§115.53)
- Agreements with community service providers (§115.53(c))
- Immediate steps when inmate is at substantial risk of imminent sexual abuse (§115.62)

PREA Standards on Victim Services

Standards referenced in today's webinar will also include:

- Institutional Coordinated Response Plans (§115.65)
- Protecting staff and inmates from retaliation for reporting sexual abuse or cooperating with investigations (§115.67(a))
- Emergency and ongoing medical & mental health care (§115.82; §115.83)
- Ongoing medical and mental health care for sexual abuse victims and abusers (§115.83)
- Sexual abuse incident reviews (§115.86)

Call to Action



Jan Russell

**Director of Violence Against
Women Policy Project &
PREA Coordinator,
Cook County Sheriff's Office
Chicago, Illinois**

Call to Action with Jan Russell



Cook County Jail, Chicago, IL

Call to Action with Jan Russell



Cook County Jail, Chicago, IL

Overview



Derek Murray
Senior Program Officer,
Just Detention International

Overview

PREA-compliant victim services programs in jails include:

- An institutional coordinated response plan (§115.65)
- Formal agreements with victim advocates and other services providers (§115.21, §115.53)
- Use of uniform evidence protocol that maximizes potential for collecting usable physical evidence (§11.21)*
- The provision of care in a trauma-informed manner

Based on “**A National Protocol for Sexual Assault Medical Forensic Examinations, Adults/Adolescents**”, www.ncjrs.gov/pdffiles1/ovw/206554.pdf.

Overview

Jails must offer these services to victimized inmates:

- Provision of emergency medical and mental health care and forensic evidence collection, as appropriate (§115.82, §115.83)
- Preventive measures (§115.82, §115.83)
- Forensic evidence collection (§115.21)
- Accompaniment by victim advocate (§115.21)

Developing the Institutional Coordinated Response Plan

The Institutional Coordinated Response Plan can also be a model for:

- Steps to take when an inmate is at risk
- Protection from retaliation
- Incident reviews

Developing the Institutional Coordinated Response Plan

THREE STEPS:

1. Review your agency policies related to victim services
2. Analyze how closely they align with current facility/agency practices
3. Convene a working group

Key Standards for PREA Compliance

Institution-based SARTs help to comply with:

- Evidence protocol and forensic medical examinations (115.21)
- Policies to ensure referrals of allegations for investigations (115.22)
- Inmate reporting (115.51)
- Inmate access to outside confidential support services (115.53)
- Staff and agency reporting duties (115.61)
- Reporting to other confinement facilities (115.63)
- Staff first responder duties (115.64)

Key Standards for PREA Compliance (continued)

Institution-based SARTs help to comply with:

- Coordinated response (115.65)
- Agency protection against retaliation (115.67)
- Criminal and administrative agency investigations (115.71)
- Reporting to inmates (115.73)
- Access to emergency medical and mental health services (115.82)
- Ongoing medical and mental health care for sexual abuse victims and abusers (115.83)
- Sexual abuse incident reviews (115.86)

Sexual Assault Response Team (SART)

What is a SART?

- Multi-disciplinary team
- Specializes in coordinated, survivor-centered response to sexual assault
- SARTs lead to better care for survivors and stronger investigative outcomes

Sexual Assault Response Team (SART)

What are the goals of a SART:

- Encourage survivor's healing and well-being
- Eliminate sexual violence – whether based in the community or in a jail
- Ensure compliance with PREA
- Strengthen investigations

Community-Based SART

A community-based SART includes (at a minimum):

- Rape Crisis Advocate
- Sexual Assault Nurse Examiner (SANE)
- Law Enforcement Officer
- Prosecutor

Institution-Based SART

An institution-based SART:

- Leads agency's efforts to eliminate sexual violence
 - Prevention
 - Detection
 - Response
- Draws expertise from different departments and ranks within the agency
- Is overseen by the agency PREA Coordinator
- Meets regularly to evaluate facility compliance with PREA and conduct incident reviews

Institution-Based SART – Key Members

Key Members

Members' roles may vary depending on a facility's population and needs, but should include a **minimum of three staff** from the following departments:

- Administrator
- Classification Supervisor
- Chief of Security
- Institutional Investigator
- Internal Affairs Investigator
- Mental Health Staff
- Medical Staff

Institution-Based SART – Key Members (continued)

The following community representatives are strongly recommended as members of an institution-based SART:

- Law Enforcement
- Sexual Assault Nurse Examiner (SANE)
- Rape Crisis Advocate
- Prosecutor

Basics of Crisis Intervention and Agreements with Service Providers



Linda McFarlane, MSW, LCSW
Deputy Executive Director,
Just Detention International

Securing Memoranda of Understanding with Community Service Providers

Inmate access to outside confidential support services (115.53):

The agency maintains or attempts to enter into memoranda of understanding or other agreements with community service providers that are able to provide inmates with confidential emotional support services. The agency shall maintain copies of agreements or documentation showing attempts.

Rape Crisis Advocate/Counselor

Role of Advocate:

- Provide confidential support and crisis intervention for survivors
- Inform the survivor about the investigation and medical examination
- Educate the survivor about healing from sexual abuse
- Offer resources and referrals
- Provide follow-up counseling, as needed



Rape Crisis Services

Acute Care	Follow-Up Care	Longer-Term Care
Crisis Intervention Hospital Accompaniment Psycho-Educational Approach	Short-Term Counseling Legal Advocacy Safety Planning	Counseling Referrals Groups Opportunities for Activism

QUIZ

- Jail inmate reveals that he is **going to kill himself** because of the **harassment** he is getting **from other inmates who learned he was raped.**
- Despite the counselor's attempts to help him work out a safety plan, he states he is determined. **He asks the advocate to keep this information strictly confidential.**

Confidentiality

Key points:

- In some states, rape crisis counselors are legally bound to keep client information confidential
- Bound by professional and ethical obligations of licensing bodies
- Advocates cannot disclose names of perpetrators for the facility
- They give survivors the tools they need to make a decision whether or not to report

Memoranda of Understanding

How to get started:

- Contact your local rape crisis center or department sex crimes division
- Describe what you are trying to accomplish
- Discuss limits to confidentiality and any current MOUS with the department
- Address safety concerns

JDI Resource Guide:

www.justdetention.org/en/resourceguides.aspx

Office on Violence Against Women:

www.ovw.usdoj.gov/statedomestic.htm

Sample MOU

MDCR will:

- **Make involvement of MUJER counselors a component of the standard response** to a report of sexual assault and/or a request for help from a survivor of sexual assault.
- **Provide for logistical needs**, such as a private meeting space for counseling sessions, and security clearance for designated counselors.
- **Respect the nature of privileged communication** between the counselor and client.
- **Facilitate follow-up and ongoing contact** between the client and MUJER/RTC counselor without regard to the presence or status of an investigation.

Sample MOU

MUJER will:

- **Provide face-to-face confidential crisis counseling** to survivors of sexual violence in MDCR custody.
- **Attend trainings** on institutional policies and procedures regarding safety and security.
- Work with MDCR officials to **obtain security clearance and follow all institutional guidelines** for safety and security.
- Contact the PREA Compliance Manager or designee to **arrange counseling sessions.**
- **Obtain informed consent**, verbally and in writing, and any additional forms **from all inmates prior to providing counseling services.**
- **Maintain confidentiality** as outlined in the informed consent form.

Model Program for Providing Victim Services

Paths to Recovery

- Advocates provide confidential, in-person crisis intervention counseling for survivors of sexual abuse who are in the jail
- Staff training and inmate education
- Community advocates serve on institution-based SARTs



Turner Guilford Knight Correctional Center, FL

Partner Conversation



Susan J. Rubio Rivera, MSSA
Executive Director,
MUJER



Lt. Wynn Timerk-Samuels
PREA Coordinator and
Accreditation Manager,
Miami-Dade Department of
Corrections and Rehabilitation

Benefits of Partnerships for Survivors

Same quality of care that is available in the community:

- Reduces the impact of trauma and promotes healthy coping skills
- Inmates learn about their rights and how to get help
- Provides opportunities to address previous trauma



Hope, survivor of sexual abuse in a jail

Benefits of Partnerships for Corrections

“Simply put, the people who come in to our jail are the people we will see in the grocery store. If we don’t make sure they are safe and get the help they need, we are only hurting our community.

– Don Bird
Jail Administrator,
Pitkin County Jail

Benefits of Partnerships for Corrections

- More resources
- Better investigations
- Improved response
- Culture change
- Safer facilities
- PREA Compliance



Gwyn Smith-Downes, from JDI, with Chief Junior of the Miami-Dade Metro West Jail.

Principles of Building Partnerships

- Seek common ground by recognizing mutual goals
- Respect each other's roles and areas of expertise
- Communicate effectively around sensitive issues
- Trust each member of the team to fulfill his/her role



JDI and Dallas County Sheriff's Office staff.

Next Steps

- Review departmental policies and protocols
- Participate in community-based SARTs
- Facilitate partnerships with community service providers
- Share resources
- Collaborate to develop new programs

Upcoming West Coast Regional Trainings

February 5, 2013: Developing Inmate Education Programs in Detention Facilities

February 6, 2013: Victim-Centered Responses to Sexual Abuse in Detention Settings

Registration Deadline Extended: Friday, January 25, 2013

Event Location: California Department of Corrections and Rehabilitation Training Center, Galt, California

Host: Just Detention International

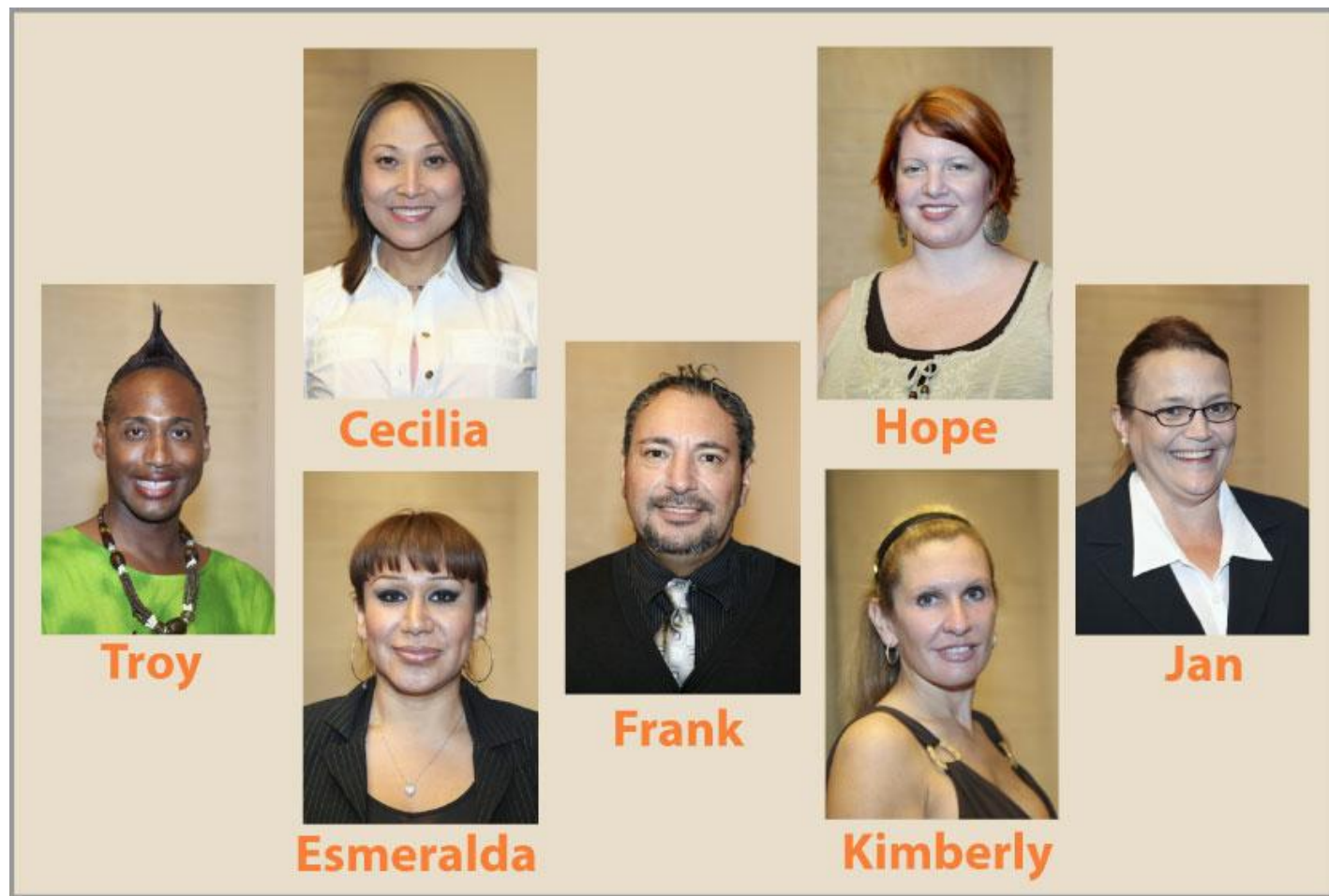
Register now at: <http://www.justdetention.org/en/sacramento-regional-training-application.aspx>

For More information: <http://www.prearesourcecenter.org/training-technical-assistance/regional-trainings>

Questions and Answers



JDI's Survivor Council



For More Information

For more information about the **National PREA Resource Center**, visit www.prearesourcecenter.org. Direct questions to info@prearesourcecenter.org

Michela Bowman
PRC Co-Director

mbowman@nccdglobal.org

Jenni Trovillion
PRC Co-Director

jtrovillion@nccdglobal.org

Tara Graham
Sr. Program Specialist

tgraham@nccdglobal.org

For more information about **Just Detention International**, visit www.justdetention.org. Direct questions to info@justdetention.org.

Connect with JDI:



www.facebook.com/JDIonFB



www.twitter.com/justdetention



NATIONAL
PREA
RESOURCE
CENTER

Thank you for joining us today!

Evaluation

We would like to ask you to please complete a brief evaluation. It will take just three minutes of your time and your feedback will help us to better assist you in the future!

Here is a link to the evaluation; it will also be emailed to you shortly.

<http://www.justdetention.org/en/making-your-plan-webinar-evaluation.aspx>

Please forward the evaluation link to others who may have joined you.

THANK YOU!