



·COLORING PAGES· CROSSWORD PUZZLES·

PREVENTION *activities* BOOK

·WORD SEARCHES· & MORE·





PREVENTION WORD SEARCH



U P L U L D S V U M G V C R N T J S G Y L L U W
 S D Q Z I G P V O L R V N V L O V N Y K E D D Q
 M L O R F R I V U D O H R C Z F G S D W S Z B H
 G O Z R E G H H Y U O F Q U M B E H E C K R Y L
 K Q C N R F S Z O L T S V W J P K T Z N G T D L
 X H J Y S E N T G A C T Z R M O U E N Q I S C P
 I T X J I P O M S X A W V J C N L I B N V B K V
 A Y O T A B I Z B I U F X P Q Q O J U J R Y R G
 E O F T O W T L I Y S C A K K E R M F J T S E G
 G D U V G H A Q O L E B N D K N M L C A G U S S
 M C U C A X L I F E S J T D U O O M Z Z L K B V
 G P O C T K E I V W P D I Z C E K O C M Q Y Z S
 P L I Z A H R G H N N H O T E D Y H P C V X W H
 S F U L Y T N T B B N M P F R M A O C U I O Z X
 C C M G X V I V V J V Z P W N O I T N E V E R P
 R Q Z I C U E O K S K A R Q P S R D E V D L B W
 C Y Z K F Q D N N D T B E S D T B M C K D P K F
 E C F D U F Y G Z E E A S N H T G R D T C B S P
 E D I I V G I F E A G U S H T L F A L Q H J O B
 S Q T H O B A B C X D R I P F U Z C N N V I I B
 C Y M G G H K K D Q M O O D E C N E I L I S E R
 U F N G T F O V J Z R R N H T Q Q C R V D Y H T
 Q S O C I A L C H A N G E G M R D X G E C R U Z
 J O R T G G F H W U S M Q G K R H Z Y V A G D S

ROOT CAUSES

EDUCATION

PREVENTION

ANTI-OPPRESSION

COMMUNITY

EQUITY

RELATIONSHIPS

RESILIENCE

SOCIAL CHANGE

CONSENT

ASK! LISTEN! RESPECT!





PREVENTION WORD MATCH

MATCH EACH WORD ON THE LEFT WITH ITS DEFINITION ON THE RIGHT.

**AWARENESS/
OUTREACH**

Activities that aim to address risk factors for potential victimization, which places the burden of safety on potential victims instead of perpetrators. This could look like a self-defense class.

**RISK
REDUCTION**

Immediate responses to sexual violence to deal with short-term consequences. This might look like a survivor seeking a Sexual Assault Protective Order after an assault occurs.

**PRIMARY
PREVENTION**

Long-term responses to sexual violence that focus on lasting consequences of violence. This might look like a survivor of sexual violence attending a support group.

**SECONDARY
PREVENTION**

Approaches that aim to prevent initial perpetration of sexual violence by changing conditions so that violence is less likely to happen. These strategies are designed to shift attitudes, behaviors, and norms.

**TERTIARY
PREVENTION**

Approaches that define sexual violence, illustrate the impact of violence on survivors, let people know how to help a friend, explain legal rights, and promote services offered in the community.





MOVING UPSTREAM





PREVENTION WORD SCRAMBLE

1. ISLNHIOEARPTS _____
2. LIACSO EHGACN _____
3. OTRO UASESC _____
4. ILRENIEECS _____
5. NCUOYMMIT _____
6. ITUYQE _____



JOYFUL SEXUALITY WORD SCRAMBLE

1. YUSLINEATS _____
2. CNIAMTYI _____
3. EGENDR _____
4. LAIXTEYUS _____
5. CENAYG _____
6. OWPER _____
7. AXLEUS HLAHTE _____

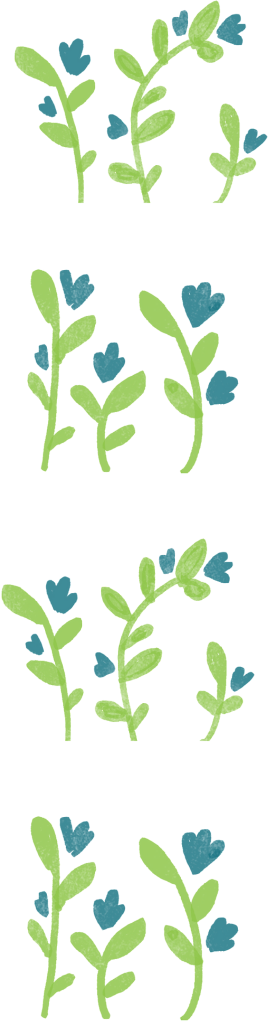




JOYFUL SEXUALITY WORD SEARCH



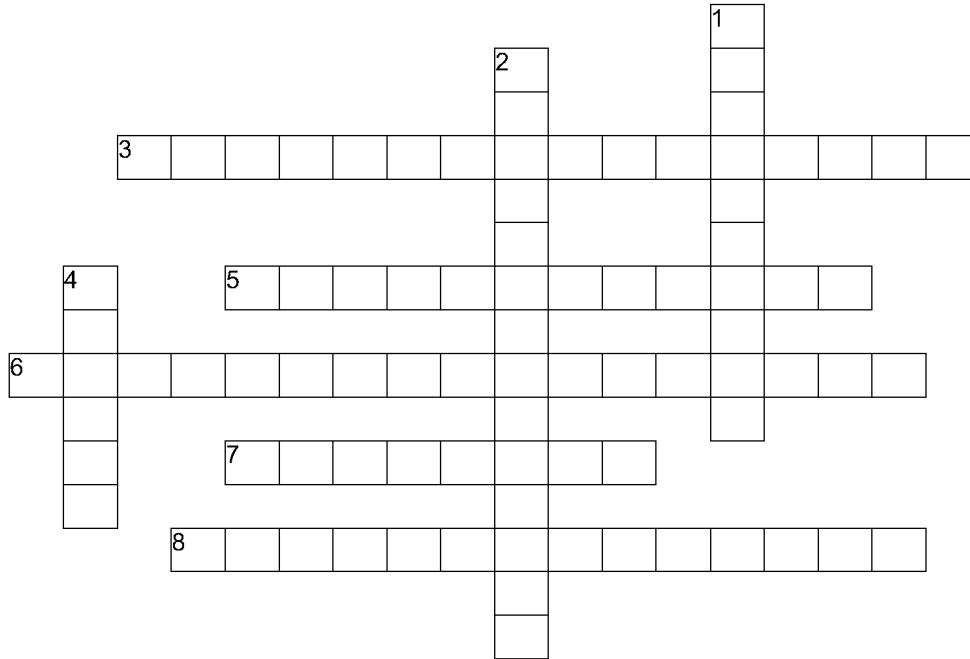
J O D Z B D V Q S A D Y T U C B Q
 B M O H I X Z K X R S C L F K B Q
 Z V Q T O J B S E F O Q U M J I X
 P D S I Z Q M D U C R M S E G I A
 O G E N C D N P H G G D I P K S S
 W Z X O Y E U L B J N B C S I Q Y
 E P U I G K N M I I W X A E M U C
 R Z A Z F W W Y C N E G A X G Y A
 M F L T I Q A N Q D I K Y X L L M
 C O H Z F K P Y K U Z U I H L F I
 Y S E F U Y T I L A U X E S I H T
 R A A S E N S U A L I T Y A R I N
 S O L W S K N B P Q Q T V K Q H I
 R W T M W H S O V D B P M M E M V
 F C H U K F X C K C Q O M O X Z C
 U U Q K V Z Y N V X L X T K L V N
 S C U U F D Q P L L S X O S K D F



SEXUAL HEALTH POWER SEXUALITY AGENCY
 GENDER INTIMACY SENSUALITY



CIRCLES OF SEXUALITY* CROSSWORD



Across

- 3. How one's characteristics and behaviors conform to or transgress gender norms and roles.
- 5. This includes factual information about sexual anatomy, sexual intercourse and different sex acts, reproduction, contraception, STI prevention, and selfcare, among others.
- 6. Whether a person's primary attraction is to the opposite sex (heterosexuality), the same-sex (homosexuality), or both sexes (bisexuality).
- 7. Ability and need to be emotionally close to another human being, and have that closeness returned.
- 8. A person's perception of having a particular gender, which may or may not correspond with their birth sex.

Down

- 1. Awareness and feeling about your own body and other peoples' bodies.
- 2. Who does what with which body parts, items, and/or partners.
- 4. The ability to negotiate and decide on sexual activities and boundaries with a partner.



* Learn more about the Circles of Sexuality:

<https://www.igwg.org/wp-content/uploads/2017/05/HandoutCirclesSexualityDefs.pdf>

Word bank:

Agency

Intimacy

Gender Identity

Gender Expression

Sensuality

Sexual Behavior

Sexual Orientation

Sexual Health

SOCIAL ECOLOGICAL MODEL (SEM)

ACTIVITY MATCH

MATCH EACH SEM LEVEL ON THE LEFT WITH AN EXAMPLE ON THE RIGHT OF A PREVENTION ACTIVITY AT THAT LEVEL

INDIVIDUAL LEVEL

PROMOTES ATTITUDES, BELIEFS AND BEHAVIORS THAT SUPPORT EQUALITY, RESPECT AND NON-VIOLENCE

Bystander project that gives youth tools to speak up or intervene when they hear or witness behaviors that support violence, sexism, homophobia etc.

RELATIONSHIP LEVEL

PROMOTES HEALTHY COMMUNICATION AND BEHAVIORS BY MODELING RELATIONSHIPS.

Developing information about the lifelong effects of sexual violence on the community that law makers can use to support increasing prevention funding to schools.

COMMUNITY LEVEL

PROMOTES A CLIMATE IN THE COMMUNITY THAT BY TARGETING PROCESSES OR POLICIES.

Delivering multiple sessions of a comprehensive sexuality curriculum that increases knowledge on healthy sexual relationships and builds skills to challenge , sexism, racism, homophobia, etc.

SOCIETAL LEVEL

PROMOTES SOCIAL NORMS, POLICIES AND LAWS THAT SUPPORT SEXUAL FREEDOM, RIGHTS AND HEALTHY RELATIONSHIPS.

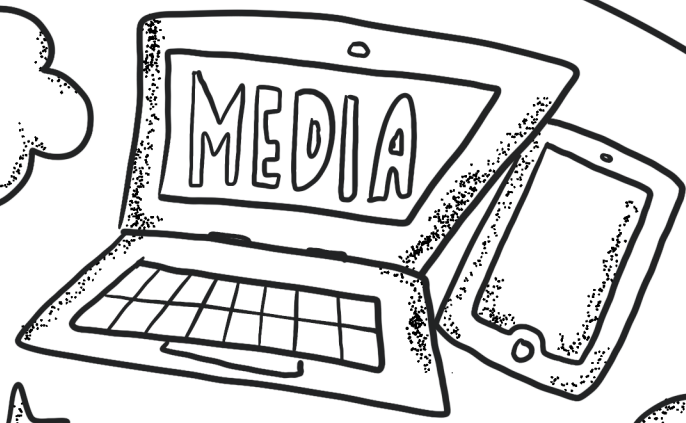
Launching a social marketing campaign on a college campus that promotes consent and safe practices in sexual relationships. Corresponding workgroup that proposes a student bill of sexual rights.



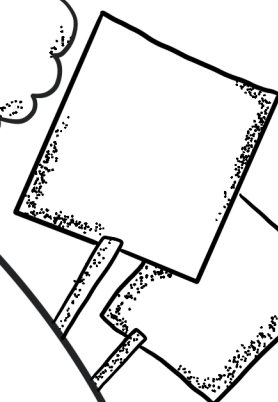
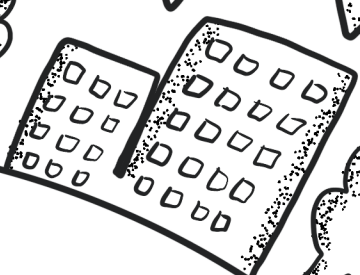


Color the S.E.M.

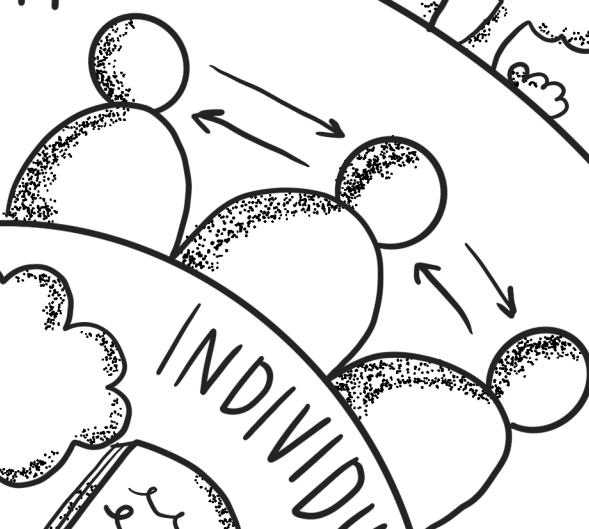
SOCIETAL



COMMUNITY



RELATIONSHIP



NO THANKS!



INDIVIDUAL





Activities designed + adapted
by the VIRGINIA SEXUAL +
DOMESTIC VIOLENCE ACTION ALLIANCE

FOR



THE Washington
COALITION for
Sexual Assault
PROGRAMS